



Wick Lane, London, E3

BUTLER & STAG



Guide Price £300,000 - £325,000
Welcome to your stylish retreat in Riverside Wharf, Bow. This sleek and contemporary one-bedroom apartment offers a perfect blend of comfort, convenience, and modern living. Spanning 616 square feet of internal living space, it promises a spacious sanctuary where every detail is designed for your utmost enjoyment.



Leasehold

- 616 Sq/Ft Internal Living Space
- Soaring High Ceilings
- One Bedroom
- Hackney Wick Station Close By
- Waterside Development
- Modern Interiors
- Chain Free
- EWS1 Compliant

As you step inside, you're greeted by an airy open-plan living space, accentuated by soaring high ceilings that enhance the apartment's spacious feel. The large windows flood the room with natural light, creating a warm and inviting atmosphere. The sleek, modern kitchen is fully equipped with high-end appliances, streamlined cabinetry, and ample counter space—perfect for both casual meals and entertaining guests.

The bedroom is a lavish size, with plenty of space and a soothing colour palette.

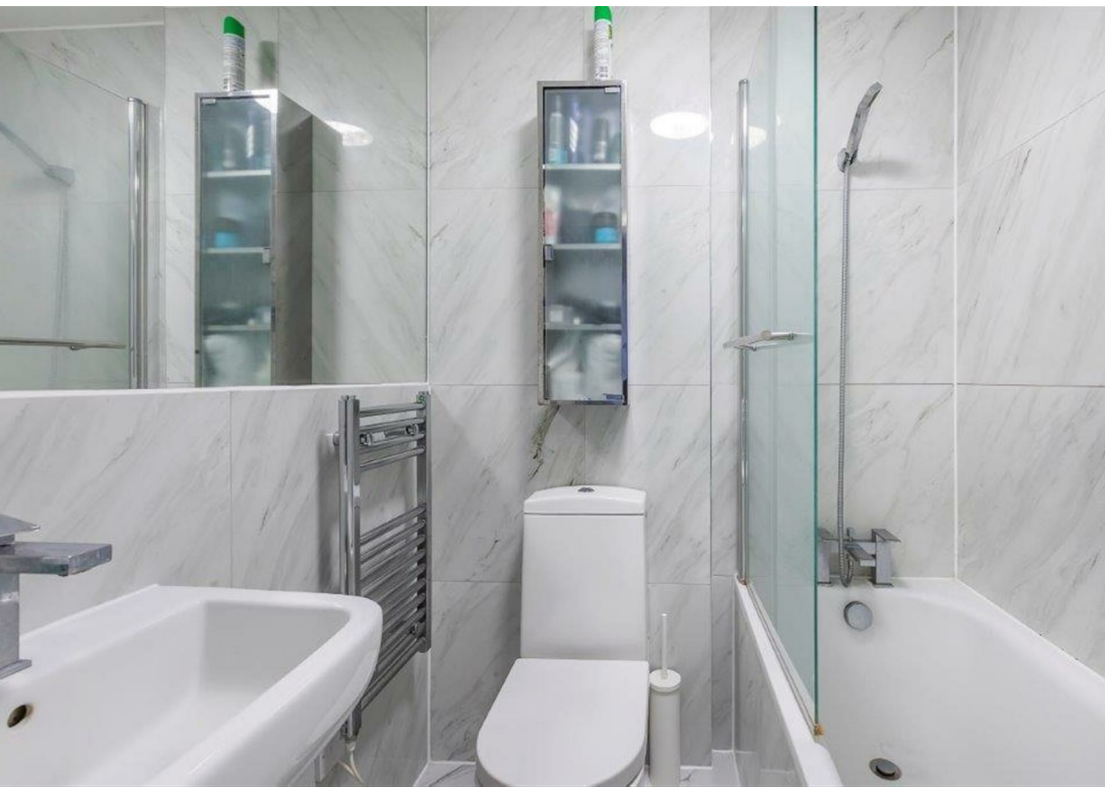
The bathroom exudes luxury with contemporary fixtures, three piece suite, and stylish finishes.

Generous built-in storage ensures that everything has its place, keeping your home organized and clutter-free.

Residents of Riverside Wharf enjoy access to exclusive amenities such as landscaped communal gardens, bicycle storage and secure parking (by separate negotiation).

Situated in Bow, this apartment offers the best of urban living with a touch of tranquillity. Riverside Wharf provides easy access to local shops, cafes, and restaurants, while nearby parks and green spaces offer opportunities for outdoor activities and relaxation. Excellent transport links connect you to the rest of London, making commuting a breeze.





Riverside Wharf

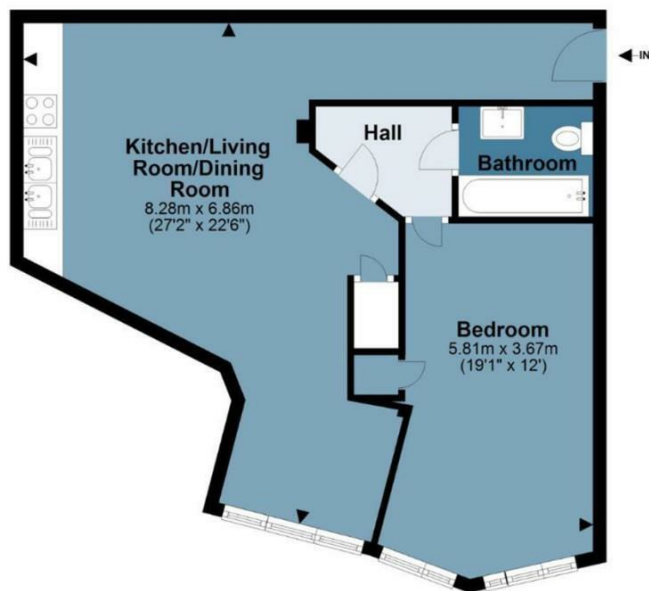
Approx. Gross Internal Area 56.4 Sq M (606.7 Sq Ft)

BUTLER & STAG



Floor Plan

Approx. 56.4 sq. metres (606.7 sq. feet)



Measurements are approximate and for illustration purposes only. While we do not doubt the accuracy and completeness, we advise you conduct a careful independent assessment of the property to determine monetary value.
© @modephoto.uk www.modephoto.co.uk

IMPORTANT NOTICE - These particulars have been prepared in good faith and they are not intended to constitute part of an offer or contract. We have not performed a structural survey on this property and the services, appliances and specific fittings have not been tested. All photographs, measurements, floor plans and distances referred to are given as a guide and should not be relied upon.

BUTLER & STAG

☎ 020 8102 1236

🏠 508 Roman Road, Bow, London, E3 5LU

✉ bow@butlerandstag.com

www.butlerandstag.uk